



# Starkville COUNTRY CLUB

**FEBRUARY 2010**

**NEWSLETTER**

## **LETTER FROM THE MANAGER**

I would like to thank those of you who participated in our annual Stockholders' meeting on January 26, 2010. We had a quorum for the sixth straight year and the 2009 financials and accomplishments were highlighted. I would like to thank our 2009 SCC President, Dave Holley, as well as Jim Latham & Danny Lott for serving on the Board. Our 2010 Officers are:

Jim Thomas                      President  
Jim Latham                      Vice-President  
Emmett Smitherman      Secretary/Treasurer

Mark your calendars for February 9, 2010 for our annual Mardi Gras Party (see details on page 3) . This party was originally scheduled for February 16, Fat Tuesday, but was rescheduled due to the MSU home basketball game. The social will start at 5:30 pm with the buffet served at 7:00 pm.

For those who missed the SCC January Family Bingo held on January 15 and the SCC First Adult Bingo party held on January 29, you missed a treat. Both events were a blast. I would like to thank Keith Winfield and Hobie Hobart for providing the entertainment.

### **TENNIS COMMITTEE MEMBERS & ENTHUSIASTS....**

There will be a Tennis Committee meeting in the SCC ballroom on Tuesday, February 9th at 11:30 am. Call in your lunch order ahead of time and invite everyone you know that is interested in tennis to join us. We are going to make plans for the upcoming year, including a tournament in March.

### **SCC Late Payment Policy**

All statements are due upon receipt and are considered past due on the 20<sup>th</sup> of each month. A grace period will exist after the 20<sup>th</sup> until the end of that month. Those bills not paid by the end of the month will be assessed a \$25 late charge and considered 30 days past due. If the bill remains unpaid the following month, the bill will be considered 60 days past due and assessed \$50 in addition to the previous month's \$25 for a total of \$75. All club privileges will be revoked at that point. Membership termination and forfeiture of club stock, if applicable, will be enforced at 90 days past due.

### **E-Mail Drawing**

### **Congratulations!**

### **Don Crabtree**

Winner of February  
Sunday Buffet

Drawing

In order to be eligible for the drawing, you must submit your e-mail address to the Club to be added to the Club's address book. If you do not have an e-mail address, simply call and have your name added to the list. If you have submitted your e-mail address but are not receiving SCC notices, please call to verify your address. The next drawing will be held February 28, 2010.

**Please repair  
ball marks, fill  
divots & rake  
bunkers.**

**Starkville Country Club  
P.O. Box 226  
Starkville, MS 39760  
Phone: (662) 323-1733  
Fax: (662) 323-1818  
www.starkvillecc.org**

Pro Shop/Business Office	Tuesday – Sunday	8:00 am – 5:30 pm
Restaurant	Tuesday – Saturday	11:00 am – 1:30 pm
Advertised Sunday Buffets		11:00 am – 1:30 pm
19 <sup>th</sup> Hole	Tuesday – Sunday	8:00 am Until - Varies with Attendance

### 2010 SCC Golf Tournament Schedule

March 20 & 21 – One Man Scramble (invitational)  
 April 3 – MGA Pick-A-Partner  
 TBA – Guy / Gal Tournament  
 May 15 – Habitat for Humanity (benefit)  
 May 22 & 23 – Handicap Match Play  
 May 31 – Memorial Day Club Scramble  
 June 12 & 13 – Four-Ball  
 TBA – Junior Championship  
 July 3 – Club Scramble (celebrating July 4<sup>th</sup>)  
 July 17 & 18 – Men's Senior & Super Senior Championship  
 July 31 & August 1 – Men's Club Championship  
 August 14 & 15 – Three Man Scramble (invitational)  
 September 11 – Oktibbeha County Alumni Association Golf Tournament  
 TBA – Women's Championship  
 October 9 & 10 – MGA Ryder Cup  
**Notice: Most of the tournaments will not cause the course to be closed for the entire day.**

### Super Bowl Sunday

The 19th Hole will be open to watch the Super Bowl on the big screen. The Club will be providing chicken tenders along with several dips. Please feel free to bring a dish. Mark Sunday, February 7, 2010 on your calendar and plan to attend.



### SCC Committees

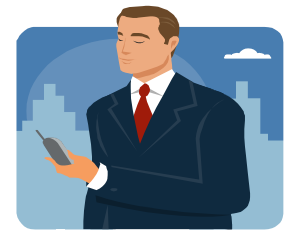
If anyone is interested in serving on any of the following committees, please contact Scott.

Flower, Golf Course Enhancement, Long Range Planning, Membership, Pool, Rules, Social / Food & Beverage, Tennis, Golf / Tournament

## 2010 - 2012 Starkville Country Club Board of Directors

Mike Couvillion 2008-2010  
 Tom Deweese 2008-2010  
 Jim Thomas 2008-2010  
 Joy Graves 2009-2011  
 Pat Salmon 2009-2011

Emmett Smitherman 2009-2011  
 Bryan Lott 2010-2012  
 Blair McKinley 2010-2012  
 Steve Taylor 2010-2012



### **SCC MEMBERSHIP CLASSES**

**FULL MEMBER** Stock Purchase Price \$500 with dues of \$130 per month with a meal requirement of \$20 per month.

**SWIMMING POOL/TENNIS/SOCIAL MEMBER** Membership Fee \$250 with dues of \$90 per month with a meal requirement of \$30 per month.

**JUNIOR MEMBER** Membership Fee \$300 with dues of \$100 per month with no meal requirement.

**SOCIAL MEMBER** Membership Fee \$175 with dues of \$60 per month with a meal requirement of \$30 per month.

**NONRESIDENT MEMBER** Membership Fee \$250 with dues of \$75 per month for residents of adjacent counties and dues of \$50 per month for residents of other counties or states.

**CORPORATE MEMBERSHIP** Stock Purchase Price \$500, with dues per individual member the same as other members depending on membership class. All charges will be billed to the corporation with a detail statement for each member.

# Men's Golf Association\* Texas Hold'em Tournament

**Thursday, February 4, 2009 (Thursday before Super Bowl)**

Registration 5:30PM

Tournament Begins 6:30PM

**Game:** A Limit Texas Hold'em Tournament

**Price of Tournament (Buy-In):** \$40

**Payout:** Based on percentage of total prize pool & number of participants

In-town guests are allowed to play the golf course up to three times per calendar year with green fees. The SCC staff will document each time a non-member plays the course. It is the member's responsibility to know how many times their guest has played. Please recommend membership to your in-town guest.

### SCC Golf Rules

**The golf course is available for Members and Member's out-of-town/county guests ONLY.** All members are required to check-in their guests in the Pro Shop.

All Members, please sign in at the Pro Shop prior to play. Please use the 90 degree cart rule and stay on cart paths around greens and tee boxes.

**During inclement weather, PLEASE use your best judgment and stay out of WET AREAS.**

#### Sunday Buffet February 14

- Fried Chicken
- Baked Ham
- Cheesy Ranch Mashed Potatoes
- Mexican Corn
- Normandy Vegetable Blend
- Baked Apples
- House Salad
- Peach Salad
- Fruit Salad
- Rolls
- Dessert
- Beverage

#### **Children's Table**

- Hotdogs
- Smiley Fries

#### Sunday Buffet February 28

- Chicken Cordon Bleu
- Beef Stroganoff
- Hash Brown Potato Casserole
- Sweet Potato & Apple Casserole
- Caribbean Vegetable Blend
- English Peas
- House Salad
- Grape Salad
- Broccoli Salad
- Rolls
- Dessert
- Beverage

#### **Children's Table**

- Pizzastix
- French Fries

### Mardi Gras Party

Mark your calendars for February 9, 2010 for our annual Mardi Gras Party. This party was originally scheduled for February 16, Fat Tuesday, but was rescheduled due to the MSU home basketball game. The social will start at 5:30 pm with the buffet served at 7:00 pm.

#### **Menu \$10.95**

- Seafood Gumbo
- Carol Winfield's Award Winning Red Beans & Rice
- Salad
- Garlic Bread
- Dessert
- Beverage

# February 2010

SUNDAY	MONDAY	TUESDAY	WEDNESDAY	THURSDAY	FRIDAY	SATURDAY
	1 Rotary Club	2 Ladies Bridge	3 Ladies Bridge Women's Activities Meeting	4 MGA Poker Tournament Book Club Meeting	5 MSU Women's Club Luncheon	6
7 Super Bowl Party	8 Rotary Club	9 Ladies Bridge Mardi Gras Party	10 Ladies Bridge	11	12	13
14 Sunday Buffet	15 Rotary Club	16 Ladies Bridge Private Luncheon	17 Ladies Bridge	18 Private Function (ballroom only)	19	20
21	22 Rotary Club	23 Ladies Bridge	24 Ladies Bridge	25	26 Private Function (ballroom only)	27 Private Function (ballroom & bar)
28 Sunday Buffet						