



Starkville COUNTRY CLUB

FEBRUARY 2009

NEWSLETTER

LETTER FROM THE PRESIDENT

First I would like to thank Brent Deweese and Wayne Carver the giving three years of their lives to making your club better. Secondly, I want to thank Keith Winfield who not only donated three years to the board but tirelessly represented us as President for two of those years. When you look around the club and notice the improvements, please thank Keith, Brent and Wayne for what they have accomplished.

As we start a new year at Starkville Country Club, let's not forget what all we have to offer. Please come out and help support YOUR club through the various functions, dinners, bingo and special events that we provide. If you have any ideas on what we can do to make your club better, please do not hesitate to tell me, Scott or any board member. We are here to serve you.

In the upcoming Board meeting we will be assigning board members as liaisons to each committee. If you would like to serve on one of our committees, please let Scott know and he will make sure to let you know who is in charge and when they meet. The committees are as follows, along with the board members who are the liaison members assigned to them.

- Social /Food and Beverage Committee – Mike Couvillion & Jim Lathum
- Golf /Tournament Committee – TBA
- Golf Course Enhancement Committee (Greens) – Danny Lott
- Pool Committee – TBA
- Tennis Committee – TBA
- Long Range Planning Committee – Dave Holley
- Membership Committee – TBA
- Flower Committee – Mike Couvillion
- Rules Committee – TBA

Thank you for your continued support. (February events are included elsewhere in newsletter)

Dave Holley

E-Mail Drawing

Congratulations

Angela Hobart!

Winner of February
Sunday Buffet

Drawing

In order to be eligible for the drawing, you must submit your e-mail address to the Club to be added to the Club's address book. If you do not have an e-mail address, simply call and have your name added to the list. If you have submitted your e-mail address but are not receiving SCC notices, please call to verify your address. The next drawing will be held February 28, 2009.

Club Operation and Contact Information

Starkville Country Club
P.O. Box 226
Starkville, MS 39760
Phone: (662) 323-1733
Fax: (662) 323-1818
www.starkvillecc.org

Pro Shop/Business Office	Tuesday – Sunday 8:00 am – 5:30 pm
Restaurant	Tuesday – Saturday 11:00 am – 1:30 pm
Advertised Sunday Buffets	11:00 am – 1:30 pm
19 th Hole	Tuesday – Sunday 8:00 am Until - Varies with Attendance

2009 SCC Tournament Schedule

March 28 & 29 – One Man Scramble (invitational)
 May 9 – Guy / Gal Tournament
 May 30 & 31 – Four Ball (invitational) or Handicap Match Play
 June 13 & 14 – Four Ball (invitational) or Handicap Match Play
 TBA – Junior Championship
 July 4 – Club Scramble
 July 11 & 12 – Men's Senior & Super Senior Championship
 July 18 & 19 – Club Championship
 August 8 & 9 – Three Man Scramble (invitational)
 TBA – Women's Championship

Notice: Most of these tournaments will not close the course for the entire day.

In-town guests are allowed to play the golf course up to three times per calendar year with green fees. The SCC staff will document each time a non-member plays the course. It is the member's responsibility to know how many times their guest has played. Please recommend membership to your in-town guest.

Welcome New Members

Jeff, Amy, Morgan & Jessica
Jenkins

Charles & Beverly Wall



Starkville Country Club Board of Directors

Dave Holley 2007-2009
 Jim Latham 2007-2009
 Danny Lott 2007-2009
 Mike Couvillion 2008-2010
 Tom Deweese 2008-2010

Jim Thomas 2008-2010
 Joy Graves 2009-2011
 Pat Salmon 2009-2011
 Emmett Smitherman 2009-2011



SCC MEMBERSHIP CLASSES

FULL MEMBER Stock Purchase Price \$500 with dues of \$130 per month with a meal requirement of \$20 per month.

SWIMMING POOL/TENNIS/SOCIAL MEMBER Membership Fee \$250 with dues of \$90 per month with a meal requirement of \$30 per month.

JUNIOR MEMBER Membership Fee \$300 with dues of \$100 per month with no meal requirement.

SOCIAL MEMBER Membership Fee \$175 with dues of \$60 per month with a meal requirement of \$30 per month.

NONRESIDENT MEMBER Membership Fee \$250 with dues of \$75 per month for residents of adjacent counties and dues of \$50 per month for residents of other counties or states.

CORPORATE MEMBERSHIP Stock Purchase Price \$500, with dues per individual member the same as other members depending on membership class. All charges will be billed to the corporation with a detail statement for each member.

Sunday Buffet February 8

Mama's Pork Chops
 Beef Ravioli
 Squash Casserole
 Normandy Vegetable Blend
 Baked Sweet Potatoes
 Fried Okra
 House Salad
 Orange Sherbet Salad
 Shrimp Salad
 Rolls
 Dessert
 Beverage

Children's Table

Pizza Sticks
 Smiley Fries

Sunday Buffet February 22

Baked Chicken / Mushroom Wine Sauce
 Lemon Pepper Catfish
 Broccoli & Rice Casserole
 Scalloped Potatoes
 Green Beans
 Fried Eggplant
 House Salad
 Chicken Pesto Pasta Salad
 Peach Salad
 Rolls
 Dessert
 Beverage

Children's Table

Corn Dogs
 Tater Tots

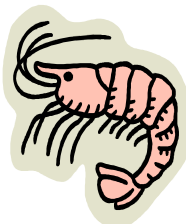
**Fat Tuesday Social
 February 24, 2009**

We will be gathering at the Club beginning at 5:30 to celebrate Fat Tuesday. We will have seafood gumbo, crawfish etouffee, salad, garlic bread, banana foster bites, chocolate brownie bites and your favorite beverages. Come join in the fun, whether you want to wear your finest Mardi Gras attire or just come casual. Dinner will be served at 7:00.

Seafood Buffet (Reservations required)

Valentine's Day - February 14

Boiled Shrimp/Cocktail Sauce
 Stuffed Crab
 Fried Catfish
 Fried Oysters
 Lemon Pepper Baked Chicken
 Turnip Greens
 Corn-on-Cob
 Cajun Potatoes
 Fried Green Tomatoes
 Hushpuppies
 House Salad
 Coleslaw
 Beverage
 Dessert



Children's Table

Hotdogs & Chips
Adults 13 & over \$19.95
Ages 6-12 \$9.95
5&under Free
Hotdogs & Chips \$4.95

Attention Ladies of the Club: As most of you know, the Flower Committee works to provide flowers for Club activities and to plan activities for the ladies of the Club. We have a good time and would welcome additional participation. We will have a Flower Committee meeting on Wednesday, February 11th at 5:30 in the Club Ballroom. Agenda items include selecting a new chairperson, and planning upcoming events. In addition to the annual luncheon, we are hoping to schedule a Bunko night, Bridge afternoon, and a Swap/Sell Bazaar. If you would like to help with any of these or have other ideas to share, please come on Wednesday or get in touch with Mike Couvillion or Scott. (couvillionmike@wmconnect.com). Hope to see you there.

The February meeting of the Book Worms will be held on the 2nd Thursday (12th) at 6PM at The Club. Our book this month is 'Southern Fried Divorce' by Judy Conner.

Be sure to bring your 'excess books' to swap and share.

Annual Stockholders' Meeting

I would like to thank those of you who participated in our annual Stockholders' meeting on January 27, 2009. We had a quorum for the fifth straight year and the 2008 financials and accomplishments were highlighted.

SCC 2009 Board of Directors Officers

President - Dave Holley
 Vice President - Jim Latham
 Secretary/Treasurer - Emmett Smitherman

February 2009

SUNDAY	MONDAY	TUESDAY	WEDNESDAY	THURSDAY	FRIDAY	SATURDAY
1 Super Bowl Party	2 Rotary Club	3 Beginners Bridge 5:30 pm	4 Intermediate Bridge 12:00 noon	5	6 Private Luncheon (MSU Women's Club)	7 Private Function (ballroom only)
8 Sunday Buffet Tennis Round Robin 3:00 pm	9 Rotary Club	10 Beginners Bridge 5:30 pm	11 Intermediate Bridge 12:00 noon Flower Committee Meeting 5:30 pm	12 Book Worm Club Meeting	13	14 Valentine's Seafood Buffet
15	16 Rotary Club	17 Beginners Bridge 5:30 pm	18 Intermediate Bridge 12:00 noon	19	20	21 Private Function (ballroom & bar)
22 Sunday Buffet Tennis Round Robin 3:00 pm	23 Rotary Club	24 Beginners Bridge 5:30 pm Fat Tuesday Social	25 Intermediate Bridge 12:00 noon	26	27	28 Private Luncheon (member lunches will be served in lunch dining area only)